

# Webb

MOTOR MOWER

MOTORMAAIER

MOTORMÄHER

TONDEUSE À GAZON MOTORISÉE

**AB 1474**

(Series 342)

**14 inch (35 cm)**

**AB 1476**

(Series 340)

**18 inch (45 cm)**

**AB 1478**

(Series 338)

**21 inch (53 cm)**

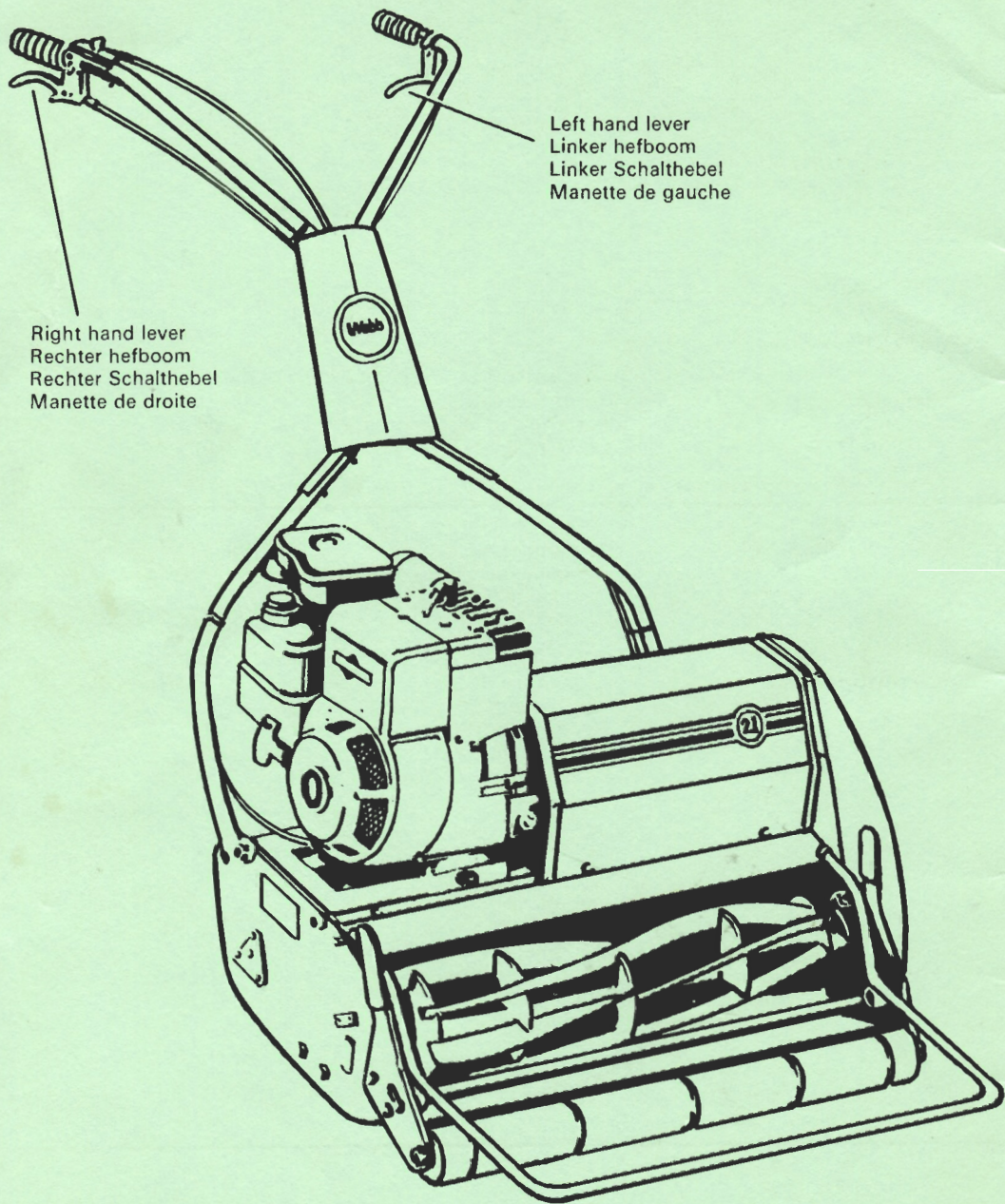
OPERATING INSTRUCTIONS

GEBRUIKSAANWIJZING

GEBRAUCHSANWEISUNG

MODE D'EMPLOI

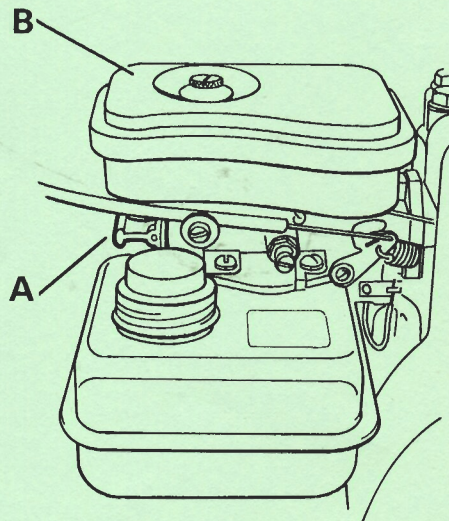
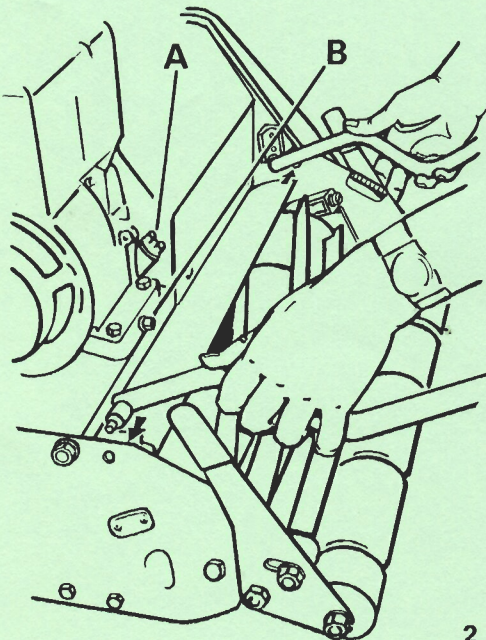
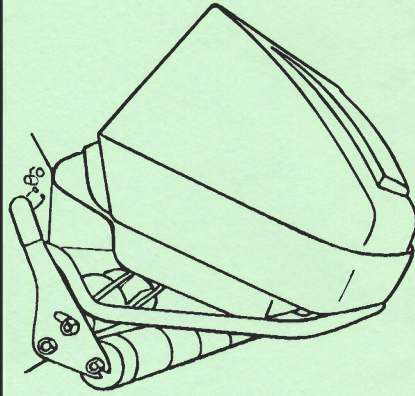
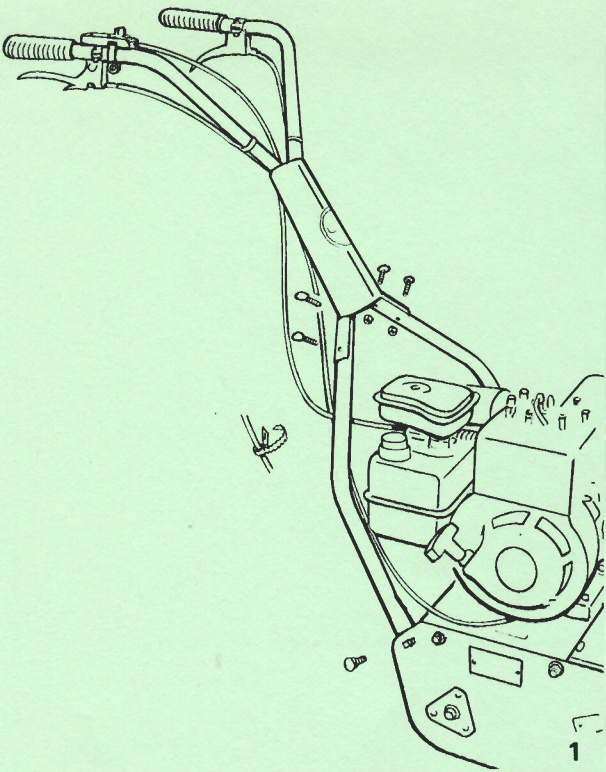
---

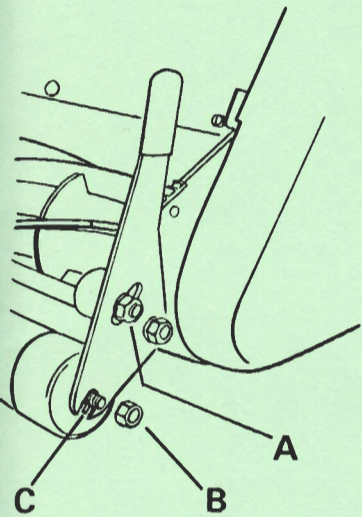


Right hand lever  
Rechter hefboom  
Rechter Schalthebel  
Manette de droite

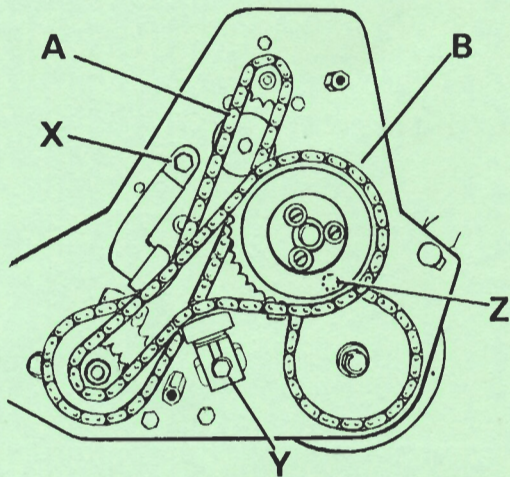
Left hand lever  
Linker hefboom  
Linker Schalthebel  
Manette de gauche



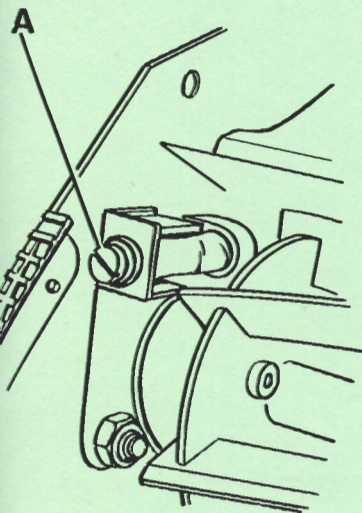




5

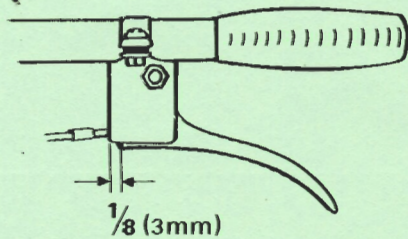
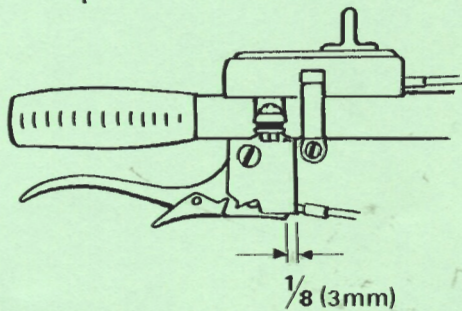


7



6

**RH Lever - Main Clutch**



**LH Lever**

8

# Introductory notes

Before using the mower read the instructions carefully, ensuring that you know your controls and know how to stop the engine quickly in any emergency. The terms left hand and right hand refer to the machine when viewed from the operating position.

## Assembly of the mower

**Handles:** fit the lower handle on to the pivot studs inside the side plates and fit bolts, washers and nuts to the upper holes. (Note that the head of the bolt is on the outside of the mower side plate.) Do not fully tighten. Assemble upper handle to lower with the 4 bolts and nuts provided. Adjust handle height to suit, and tighten nuts firmly. See Fig. 1. Fit cable ties.

**Grass Box Cradle:** Register grass box cradle to the side plates of the mower. See Fig. 2.

**Grass Box:** Fit grass box into cradle, as shown in Fig. 3.

## Preparation for use

With the engine level fill the sump with SAE 30 oil to the level of the threads in the filler point hole 'A' Fig. 2. The sump holds approximately 1 pint (0.57 litres). See Engine Manufacturer's leaflet for further details on engine. Fill petrol tank with low grade (\*\*) petrol. The engine is a four stroke engine and NO OIL SHOULD BE PUT IN THE PETROL TANK.

**IMPORTANT:** Petrol is highly inflammable.

Add fuel before starting the engine. Avoid spilling petrol, this can damage paint work, and do not refill the petrol tank while the engine is running or while you are smoking. If petrol is spilled, do not attempt to start the engine but move machine away from the area of spill and avoid creating any source of ignition until petrol vapours have dissipated. Store fuel in a cool place in a container specifically designed for the purpose. In general, plastic containers are unsuitable.

**The Cutting Unit:** The cutting cylinder must always be adjusted to make light contact with the fixed bottom blade. Too heavy contact will cause excessive load on the engine and transmission. The cutting cylinder is correctly adjusted on assembly, but could alter slightly during transit. Check adjustments before the machine is started and the drive engaged and if necessary readjust cutting cylinder following the instructions given under 'Adjustments and Maintenance'.

## Use of controls

**NOTE:** The engine should not be started until this section has been read.

There are three controls on the mower; these are located on the upper handles. The right hand lever is the main clutch control. With this lever raised (which locks automatically) the transmission is disengaged from the engine. To engage the main clutch (causing the cylinder to rotate and the mower to move forward) release the safety catch and SMOOTHLY lower the lever. To stop the cutting cylinder rotating and the forward motion of the mower, raise the lever to allow the safety catch to automatically engage.

The left hand lever.

This disengages the drive to the rear roller when held up, and as such serves a dual purpose as follows:-

- a) With the lever raised, the mower can be moved freely backwards and forwards without the engine running.
- b) With the main clutch engaged, i.e. R.H. lever down, the forward travel of the mower can be stopped by holding up the left hand lever, allowing cutting cylinder drive only. This feature is particularly useful in confined areas, such as between flower beds etc., where



manual propulsion only is required.

With the main R.H. clutch lever engaged, forward travel will again be obtained when the left hand lever is lowered to its normal rest position.

The engine speed control is located on the right hand handle adjacent to the main clutch control. Sliding the control towards you increase the speed of the engine. To stop the engine push the control fully away from you. This control is easily operated by the thumb whilst holding the handlebars for the normal mowing operation.

## Starting the engine

Before starting the engine ensure that the oil is up to the prescribed level and that there is sufficient fuel in the petrol tank. Ensure that the right hand main clutch lever is pulled up.

2 h.p. engine. Pull out choke plunger 'A', see Fig. 4 and set the engine speed control to mid position. Rotate the engine by pulling the recoil starter slowly and evenly; do this twice. Never allow the starter rope to fly back into the housing. Push in choke and pull recoil started smartly and engine should start.

3 h.p. engine. Proceed as above except do not push in choke until engine has fired.

The engine speed can be regulated with the speed control to give ideal operating speed for conditions prevailing. With the warm engine it may not be necessary to use the choke. Do not overspeed the engine or alter governor settings. Excessive engine speed is dangerous and shortens mower life.

## Using the mower

Ensure that the cutting height is not set too low. The cutting range provided on the mower can be varied from 5/16" to 1 1/6" (8 mm to 27 mm) measured on a hard surface. The mower will cut closer on grass; therefore, set rollers in mid position initially, do a trial run, and readjust if necessary. (See 'Adjustments and Maintenance').

The machine is equipped with a bank of front rollers. The centre sections can be removed if desired, and the two outside rollers retained in position by fitting the circlips supplied with the mower for this purpose. This facility is provided to enable longer overgrown lawn, grass etc., to be cut, which would otherwise be pushed down by the rollers. Instruction on how to remove the rollers is given in 'Adjustments and Maintenance'.

Should the mower be required to cut long grass on a regular basis, outrigger wheels are available. These are used to replace the front rollers completely. These are available as an accessory under the following part number:-

BB0102 (All Models)

The grass box is supported in a tubular cradle. When mowing without the box, the cradle can either be placed in the park position or unclipped from the machine as shown in Fig. 2.

To start mowing, release safety catch and smoothly lower the right hand clutch lever. When turning the mower the left hand lever is pulled up to stop the forward travel of the mower.

## **WARNING. The cutting cylinder continues to rotate after the machine is declutched, i.e. after right hand lever is pulled up.**

### NOTE.

In the event of striking a solid object, the machine should be halted, the engine stopped, the spark plug lead disconnected and the mower inspected for damage. The transmission guard should be removed and the chain adjusters checked. For correct settings of chain tension see 'Adjustments and Maintenance'.

Before restarting and operating the mower, any damaged parts should be repaired or replaced.

# Do's and don'ts for safe mowing

1. Do read the Owners Manual carefully. Know your controls, learn how to stop the mower quickly in any emergency.
2. Do make sure the lawn is clear of sticks, stones, bones, wire and debris. They could be thrown up by the blades.
3. Do inspect visually your mower before use to see that the bottom blade, blade bolts, and cutting cylinder assembly are not worn or damaged. Replace worn or damaged blades together with their fixing in sets to preserve balance.
4. Do be sure that the mower is in a safe operating condition. Use only replacement parts made and guaranteed by Wolsley Webb Limited or the motor manufacturer.
5. Do not mow whilst people, especially children or pets, are in the mowing area.
6. Do ensure that the guards provided by the manufacturer are always used when mowing.
7. Do not mow barefoot or in open sandals, wear substantial footwear.
8. Do not operate the engine in a confined space where exhaust fumes (carbon monoxide) can collect.
9. Do stop the engine whenever you leave the mower, empty the grass box, refuel or make any form of adjustment.
10. Do stop the engine before pushing the mower across any surface other than grass.
11. Do not allow children or people unfamiliar with these instructions to use the mower.
12. Do avoid operating the mower in wet grass where feasible. Always be sure of your footing on slopes.
13. Do exercise extreme caution when changing direction on slopes. Mow across the face of slopes, never up and down. Do not mow excessively steep slopes.
14. Do not ever pick up or carry a mower when it is operating.

## Adjustments and maintenance

Before working on the mower or carrying out any adjustments, stop engine and disconnect spark plug lead.

**TAKE CARE NEVER TO TRAP FINGERS IN THE BLADES.**

**Height of Cut Adjustment:** The height of cut is varied by moving the front rollers up or down. This is achieved by slackening the lock nuts (A) see Fig. 5 on both sides of the machine and moving the quadrant to the desired position. Ensure that the back edge of the quadrant adjusters corresponds to the same position on both sides of the mower.

The height is indicated as follows:-



**Removing Centre Front Rollers:** Release nuts B Fig. 5 and remove front roller assembly complete. Remove all rollers and fit the two circlips provided into the grooves at each end of the spindle. Assemble one large washer, a short roller, and a further washer. Re-assemble front roller spindle into quadrants. Note: on one end of the spindle there is a peg 'C' protruding the shaft. Ensure that this is assembled as shown in Fig. 5. Tighten nut B firmly.

**Cutting Cylinder Adjustment:** Disengage the main clutch, by raising the R.H. Lever.

Rotate cutting cylinder slowly by hand checking that each blade lightly touches the fixed bottom blade along its full length. This can be checked by cutting paper along the length of the blade. If necessary the cylinder can be moved up or down by turning the adjuster screws 'A' Fig. 6. Turning the screw clockwise reduces the gap between the cutting cylinder and the fixed blade. When adjusting the cylinder, turn each adjuster screw a small amount at a time to avoid setting one side of the cylinder harder than the other.

### **DO NOT BE TEMPTED TO SET THE BLADES 'HARD ON'.**

**Chain Adjustment:** There are three separate chains and chain adjusters in the transmission drive. These should require very little attention unless the cutting cylinder strikes a solid object which may result in the primary chain drive 'A' see Fig. 7 requiring resetting. Slacken off the tensioning screw X and re-position adjuster arm so that the straight portion of the chain has a total of  $\frac{1}{2}$ " (12 mm) movement at the midway position. The same applies to the secondary chain drive 'B' from the cutting cylinder to the rear roller clutch. The tensioner screw for this chain drive is 'Y' Fig. 7.

The final-drive rear roller chain should rarely require adjusting. However, should it be necessary, the tensioner screw is 'Z' and is located on the inside face of the left hand side plate.

**Left Hand and Right Hand Clutch Levers:** The clearances specified at the clutch control levers and as shown in Fig. 8 must be maintained at all times to facilitate clutch plate wear and/or cable stretch.

To ensure that the correct clearances exist at both clutches, turn the adjusters of each clutch cable until a 'free play' is obtained at the levers. This free play can be measured between the levers and the body clip. Use the spanner supplied with the machine as the gauge for obtaining the free play required. Ensure the lock-nuts on the adjusters are firmly tightened. When correctly adjusted, the levers should move the 'free play' amount before any resistance is felt.

Failure to maintain the above clearances usually results in the following:-

- a) Clearance too small: Clutch slips, little or, no drive to cutting cylinder or rear roller.
- b) Clearance too large: Clutches fail to disengage when levers pulled up, or only partial disengagement causing drag on the drive.

**Engine Maintenance:** Refer to engine manufacturer's leaflet supplied.

**Changing Engine Oil:** After the initial filling the engine oil should be changed after the first 5 hours use, thereafter change the oil after every 25 hours use.

To change the engine oil, remove the drain plug 'B' as shown in Fig. 2. Leave for a time to drain off, then replace the drain plug. Refill with fresh SAE 30 oil. The oil level should be checked after every 5 hours use and topped up as required. This operation should not be carried out on the lawn as spillage of oil will damage the grass.

**Air Filter 'B':** (Fig. 4) This should be serviced at the same time that the engine oil change is carried out. The foam rubber element of the air filter should be washed in soapy water, squeezed dry, then lightly oiled with engine oil and refitted. In dusty conditions, clean the air filter more frequently. Never use the mower without the air filter.

**Engine Cooling:** Do not allow the fins of the cylinder head or crankcase to become blocked with grass as this can lead to the engine overheating and possible fire hazard. Clean out periodically.

**Lubrication:** Remove the chain guard monthly to inspect condition of chains. Clean out any foreign matter if present, check chain tensions, and lightly brush chains with good quality grease if they appear dry.

Apply a light lubricating oil between the front rollers periodically and also to the clutch cables and clutch levers.



On 18" and 21" machines apply a light lubricating oil onto the centre of the landroll shaft between the two landroll sections:

Cutting cylinder and top shaft bearing are pre-packed with grease on assembly and normally only require replenishing with grease when machine is serviced. The landroll and clutch bearings are both fully sealed units.

## Winter storage

At the end of the cutting season the machine should be thoroughly cleaned (do not use water). Examine the cutting blades, operating cables, chains etc. for any wear or damage which may require rectification. Smear the blades, chains, cables etc., with oil or light grease.

To protect the engine from internal corrosion, empty fuel tank and run engine until carburettor is dry. Inject a teaspoonful (5 ml) of oil through spark plug opening and rotate engine a few times by hand. Replace spark plug. The mower should be stored in a dry place. The right hand lever should be left in the up position, i.e. main clutch disengaged.

## Service

When the machine requires servicing we advise that this be entrusted to a competent lawnmower Service Agent. Further information regarding servicing facilities and spare parts can be obtained from Wolseley Webb Limited. In any communication regarding the machine, the model number and machine number should be quoted. These will be found on a plate fixed to the side of the mower.

## Useful tips on getting the best results from your mower and your lawn

Keep your machine clean and well maintained. Mow as regularly as possible and if practical mow in a different direction to the previous time. This will benefit your lawn. Do not be tempted to cut too close as this will retard grass growth, possibly damage your lawn, and can create moss. Assist grass growth by applying lawn fertilisers.

Common occurrences caused by bad mowing practices:-

- 1) Ridges between one cut and the next.  
Check that the front roller lever quadrants are correctly lined up with the height indicators, to the same mark on both sides of the machine. If the front rollers have been removed check that they have been reassembled correctly.  
When mowing, ensure that sufficient overlap occurs between one run and the next.
- 2) Lawn exhibiting different colour on part of the width of cut.  
This discolouration is caused by bruising which in turn is the result of the mower not cutting cleanly along the entire length of bottom blade - readjust cylinder to give light contact along the whole length of bottom blade.
- 3) Mower not cutting cleanly - cylinder not fully adjusted on to the bottom blade. An easy check is with the left hand lever **down**. If mower can be pulled backwards and the cutting cylinder revolves, the cutting cylinder requires adjusting to the bottom blade.

# Webb

## LAWNMOWERS

- |                |                   |                           |
|----------------|-------------------|---------------------------|
| <b>AB 1254</b> | <b>SERIES 343</b> | <b>14" MAINS ELECTRIC</b> |
| <b>AB 1256</b> | <b>SERIES 341</b> | <b>18" MAINS ELECTRIC</b> |
| <b>AB 1474</b> | <b>SERIES 342</b> | <b>14" MOTOR MOWER</b>    |
| <b>AB 1476</b> | <b>SERIES 340</b> | <b>18" MOTOR MOWER</b>    |
| <b>AB 1478</b> | <b>SERIES 338</b> | <b>21" MOTOR MOWER</b>    |

## PARTS MANUAL

---

Revised October 1983

# INDEX

COVERS	Page 3
CHASSIS	Pages 4-5
MAIN CLUTCH, LAND ROLL CLUTCH ASSEMBLIES	Pages 6-7
SPROCKETS, CHAINS AND ADJUSTERS	Pages 8-9
GRASS BOX AND HANDLE ASSEMBLIES	Pages 10-11
ELECTRIC MOTOR AND MAINS ELECTRIC PLATFORM	Pages 12-13
LAND ROLLER ASSEMBLY	Page 14
OUTRIGGER WHEELS	Pages 15
WIRING DIAGRAM	Page 16

---

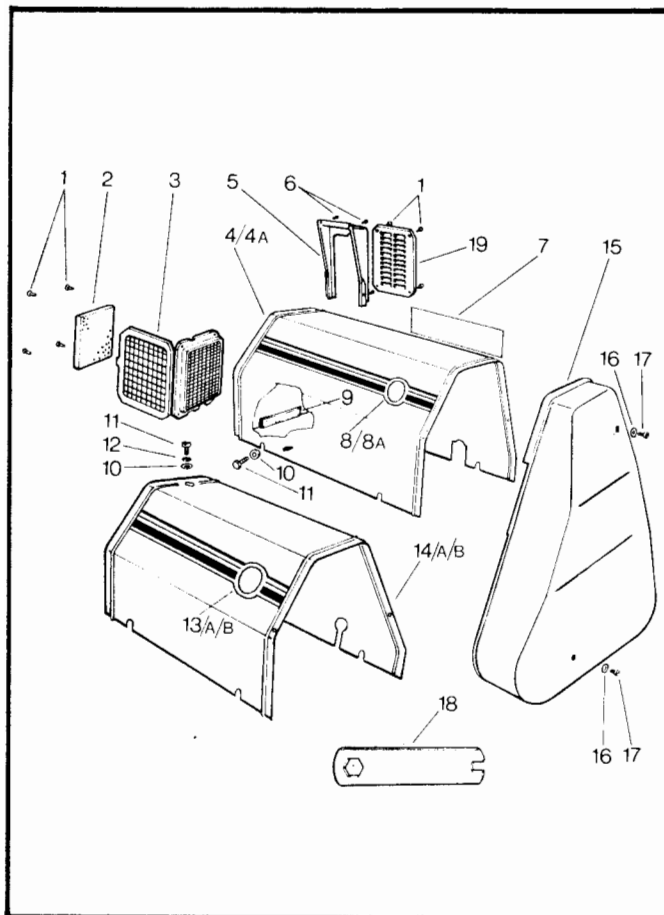
Engine parts should be obtained from your nearest **Briggs & Stratton** agent.

When ordering spare parts please make sure that you quote the model, part number and description.

AB.1478 Engine part no. EB.1494A1 **Briggs & Stratton 80202-1085-01**  
AB.1476 Engine part no. EB.0341A1 **Briggs & Stratton 66102-0374-03**  
AB.1474 Engine part no. EB.0341A1 **Briggs & Stratton 60102-0374-03**

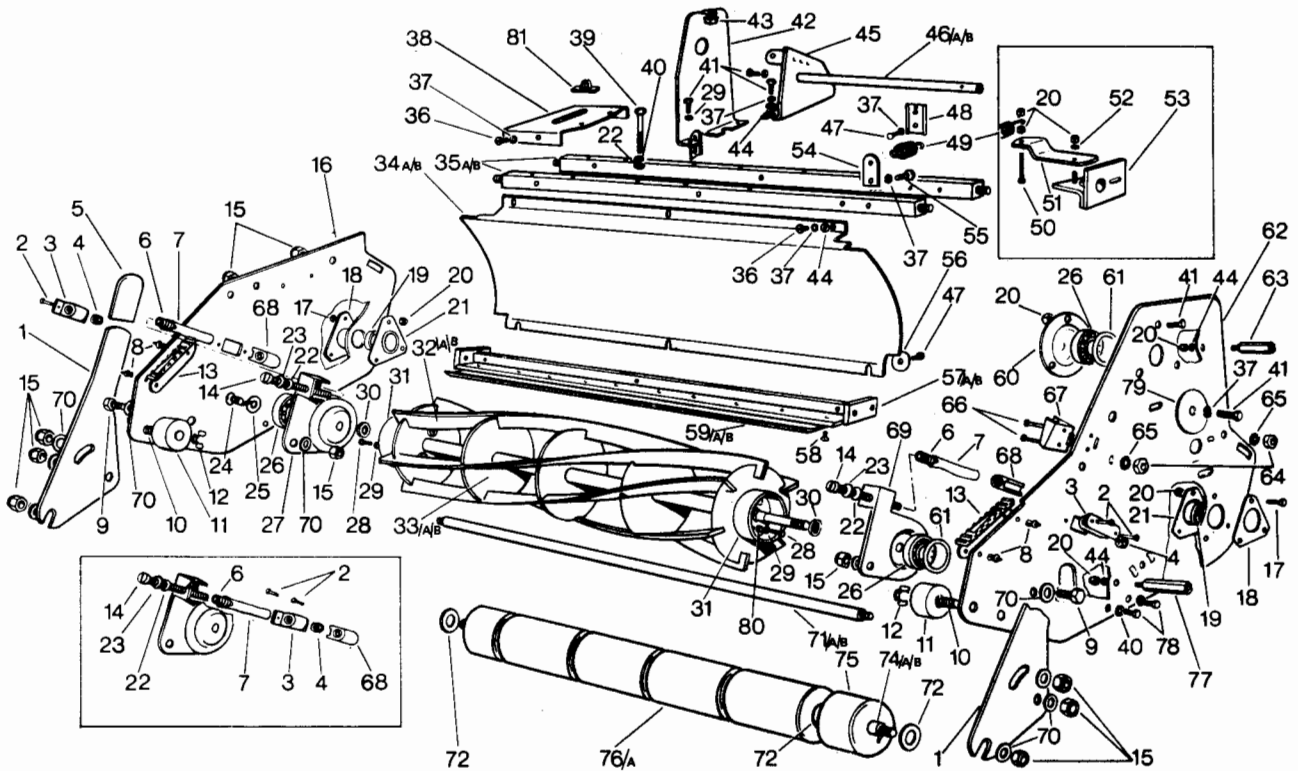


# COVERS



ITEM No.	PART No.	PART NAME	QUANTITY PER MACHINE					
			AB 1254	AB 1256	AB 1474	AB 1476	AB 1478	
			343	341	342	340	338	
1	EB.0243A1	Pop Rivet	8	8				
2	EB.0234B1	Filter Pad	1	1				
3	EB.0233B1	Filter Holder	1	1				
4	EB.1713A1	Motor Cowl	1					
4A	EB.1544A1	Motor Cowl		1				
5	EB.1704B1	Moulded Canopy	1	1				
6	LM.5600	Pop Rivet	4	4				
7	EB.1775A1	Warning Decal	1	1				
8	EB.1714A1	Emblem (Electric 14")	1					
8A	EB.1696A1	Emblem (Electric 18")		1				
9	EB.1668B1	Edge Strip	1	1				
10	MW.6/12.5/1.6	Washer	5	5	5	5	5	5
11	MS.0906/10	Screw	5	5	5	5	5	5
12	LWM.6	Lockwasher	5	5	5	5	5	5
13	EB.1612A1	Emblem 14"			1			
13A	EB.1611A1	Emblem 18"				1		
13B	EB.1375A1	Emblem 21"					1	
14	EB.1626A1	Clutch Cowl			1			
14A	EB.1625A1	Clutch Cowl				1		
14B	EB.1374A1	Clutch Cowl						1
15	EB.1488P1	Chain Guard	1	1	1	1	1	1
16	MW.8/17/1.6	Washer	2	2	2	2	2	2
17	MS.0908/12	Screw	2	2	2	2	2	2
18	EB.1397B1	Spanner	1	1	1	1	1	1
19	EB.1534B1	Exhaust Louvre	1	1				

# CHASSIS



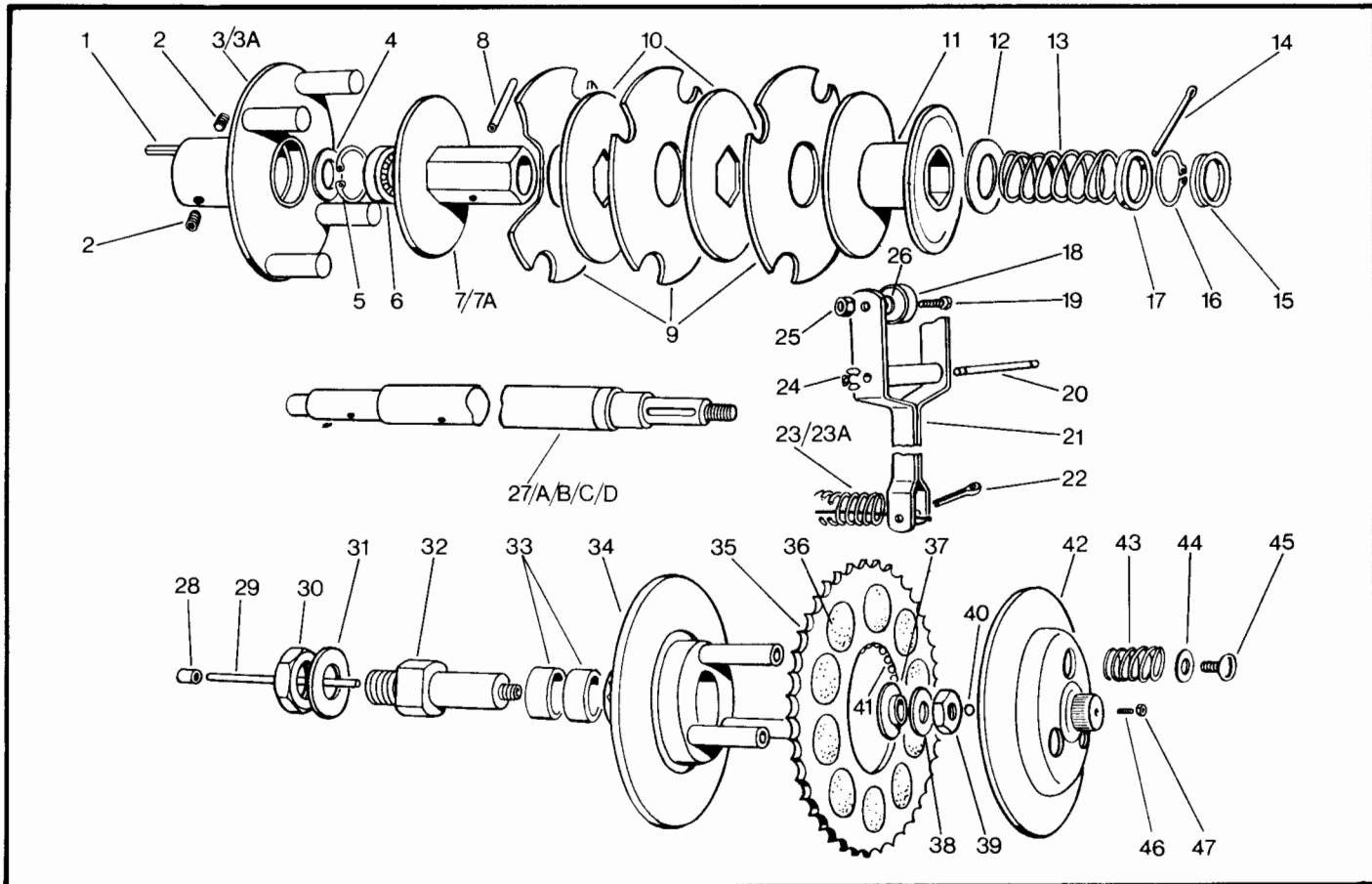
ITEM No.	PART No.	PART NAME	QUANTITY PER MACHINE				
			AB 1254	AB 1256	AB 1474	AB 1476	AB 1478
1	EB.1319P1	Lever Quadrant	2	2	2	2	338
2	EB.1359A1	Pop Rivet	4	4	4	4	4
3	EB.1358A1	Nut Block	2	2	2	2	2
4	EB.0578A1	Nut	2	2	2	2	2
5	EB.1335B1	Dip Moulding	2	2	2	2	2
6	EB.1353B1	Spring	2	2	2	2	2
7	EB.1354B1	Sleeve	2	2	2	2	2
8	EB.1010B1	Rokut Rivet	4	4	4	4	4
9	EB.1350B1	Pivot Bolt	2	2	2	2	2
10	EB.1323B1	Stud	2	2	2	2	2
11	EB.1325B1	Rubber Buffer	2	2	2	2	2
12	EB.1440A1	Klip Ring	2	2	2	2	2
13	EB.1336B1	Height Indicator	2	2	2	2	2
14	MS.0708/80	Screw	2	2	2	2	2
15	EB.0579A1	Nut	2	2	2	2	2
16	EB.1339P1	Side Plate	1	1	1	1	1
17	MS.106/14	Screw	6	6	6	6	6
18	EB.1402B1	Bearing Plate	2	2	2	2	2
19	EB.0191A1	Bearing	2	2	2	2	2
20	EB.0577A1	Nut	6	6	6	6	6
21	EB.1476B1	Bearing Holder	2	2	2	2	2
22	MW.8/17/1.6	Washer	6	6	6	6	6
23	EB.1341B1	Adjuster Cap	2	2	2	2	2
24	EB.1697A1	Screw	1	1	1	1	1
25	EB.1435B1	Washer (Countersunk)	1	1	1	1	1
26	EB.1347A1	Bearing	2	2	2	2	2
27	EB.1345B1	Bearing Holder RH	1	1	1	1	1
28	MS.106/12	Screw	4	4	4	4	4
29	LWM.6	Spring Washer	4	4	4	4	4
30	EB.1428A1	'V' Ring	2	2	2	2	2
31	EB.1355A1	Bearing Cup	2	2	2	2	2
32	EB.1504A1	Blade					6
32A	EB.1558A1	Blade	6		6		
32B	EB.1557A1	Blade		6		6	
33	EB.1759D1	Cutting Cylinder					1
33A	EB.1776D1	Cutting Cylinder	1		1		
33B	EB.1561D1	Cutting Cylinder		1		1	
34	EB.1314P1	Throw Plate					1
34A	EB.1610P1	Throw Plate	1		1		
34B	EB.1609P1	Throw Plate		1		1	
35	EB.1360P1	Engine Bearer					2
35A	EB.1556P1	Engine Bearer	●	●	2		
35B	EB.1555P1	Engine Bearer	●	●		2	
36	MS.0906/10	Screw			7	7	7
37	LWM.6	Lockwasher			7	7	7
38	EB.1326P1	Blank Plate			1	1	1
39	MB.0108/45	Bolt (Engine)			4	4	4
40	LWM.8	Lockwasher			8	8	8
41	MS.106/14	Screw			6	6	6
42	EB.1382P1	Cover Plate	●	●	1	1	1

ITEM No.	PART No.	PART NAME	QUANTITY PER MACHINE				
			AB 1254	AB 1256	AB 1474	AB 1476	AB 1478
43	EB.0315A1	Caged Nut	1	1	1	1	1
44	MW.6/12.5/1.6	Washer	2	2	2	2	2
45	EB.1396P1	Carrier Plate			1	1	1
46	EB.1367P1	Tie Bar					1
46A	EB.1589P1	Tie Bar				1	
46	EB.1588P1	Tie Bar					1
47	MS.106/10	Screw			3	3	3
48	EB.1365B1	Cable Stop Bracket			1	1	1
49	EB.1503B1	Spring	●	●	1	1	1
50	MS.0705/25	Screw	●	●	1	1	1
51	EB.1368B1	Release Link	1	1	1	1	1
52	MW.6/12.5/0.8	Washer	1	1	1	1	1
53	EB.1457P1	Pivot Bracket	1	1	1	1	1
54	EB.1665B1	Bracket	1	1	1	1	1
55	MS.0106/8	Screw	1	1	1	1	1
56	EB.1500A1	Washer	2	3	2	3	3
57	EB.1331P1	Sole Plate					1
57A	EB.1597P1	Sole Plate	1		1		
57B	EB.1596P1	Sole Plate		1		1	
58	EB.1721B1	Screw	5	6	5	6	7
59	EB.1330A1	Bottom Blade					1
59A	EB.1595A1	Bottom Blade	1		1		
59B	EB.1594A1	Bottom Blade		1		1	
60	EB.1351B1	Bearing Holder	1	1	1	1	1
61	EB.1535A1	Spacer	2	2	2	2	2
62	EB.1836P1	Side Plate *	●	●	1	1	1
63	EB.1489B1	Stud Short	1	1	1	1	1
64	MN.0210	Nut	2	2	2	2	2
65	FDM.10EXT	Lockwasher	2	2	2	2	2
66	EB.1372A1	Pop Rivet	2	2	2	2	2
67	EB.1371B1	Parking Clip	1	1	1	1	1
68	EB.1455B1	Thread Protector	2	2	2	2	2
69	EB.1346B1	Bearing Holder LH	1	1	1	1	1
70	MW.10/21/2.0	Washer	8	8	8	8	8
71	EB.1327P1	Stabiliser Rod					1
71A	EB.1587P1	Stabiliser Rod	1		1		
71B	EB.1586P1	Stabiliser Rod		1		1	
72	MW.16/30/2.0	Washer	7	7	7	7	7
73							
74	EB.1320A1	Roller Spindle					1
74A	EB.1583A1	Roller Spindle	1		1		
74B	EB.1582A1	Roller Spindle		1		1	
75	EB.1321B1	Wood Roller (Short)	2	2	2	2	2
76	EB.1322B1	Wood Roller (Long)					4
76A	EB.1376B1	Wood Roller (Long)	3	4	3	4	4
77	EB.1490B1	Stud (Long)	1	1	1	1	1
78	MS.108/16	Screw	4	4	4	4	4
79	EB.1366B1	Washer	1	1	1	1	1
80	EB.1507A1	Insert	4	4	4	4	4
81	EB.1837A1	Cord Grip			1	1	1

N.B. Parts marked ● please see Page 13 for Electric Motor & Mains Electric Platform



# MAIN & LANDROLLER CLUTCH ASSEMBLY

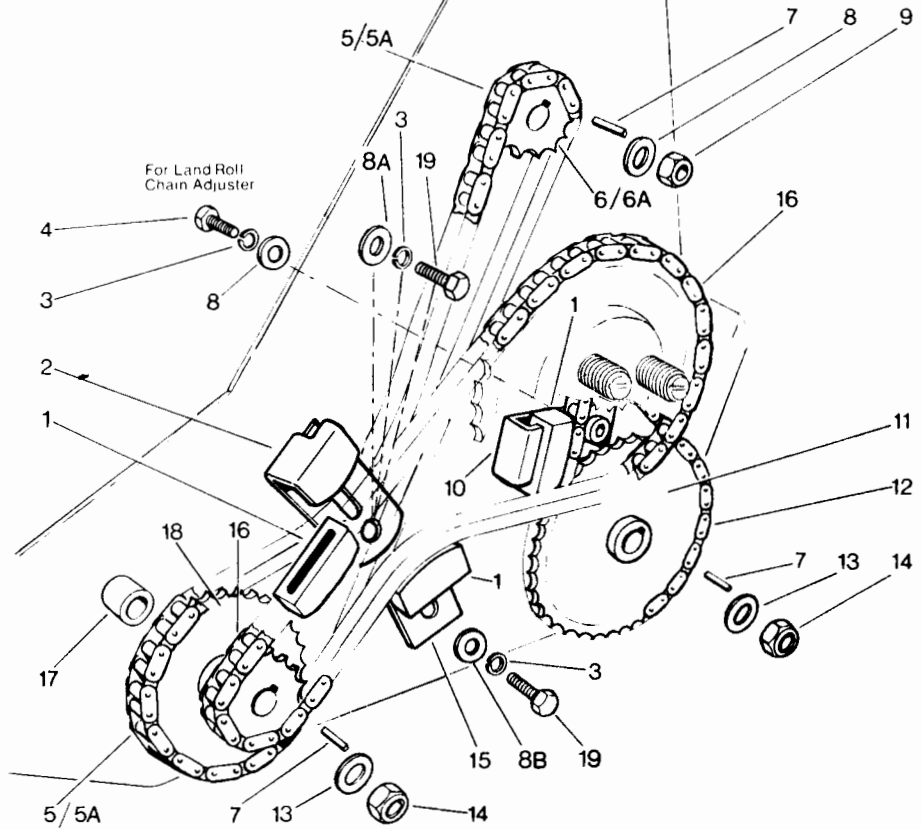


ITEM No.	PART No.	PART NAME	QUANTITY PER MACHINE				
			AB 1254	AB 1256	AB 1474	AB 1476	AB 1478
1	LM.657	Key			1	1	1
2	EB.0537B1	Grub Screw			2	2	2
3	EB.1415B1	Drive Dog Assembly					
3A	EB.1789B1*	Drive Dog Assembly			1	1	
4	MW.12/24/1.6	Washer					
5	EB.1421A1	Circlip					1
6	EB.1420A1	Bearing			1	1	1
7	EB.1424A1	Back Plate					
7A	EB.1795A1	Back Plate			1	1	
8	EB.1425A1	Spirol Pin			1	1	1
9	EB.1404A1	Friction Plate			2	2	3
10	EB.1414A1	Plate			1	1	2
11	EB.1410A1	Clutch Release			1	1	1
12	MW.18/34/2	Washer			1	1	1
13	EB.1412B1	Spring			1	1	1
14	EB.1430A1	Cotter Pin			1	1	1
15	EB.1428A1	'V' Ring	1	1	1	1	1
16	EB.1431A1	Circlip	1	1	1	1	1
17	EB.1411A1	Collar			1	1	1
18	EB.1393A1	Bearing			2	2	2
19	MS.0106/18	Screw			2	2	2
20	EB.1401A1	Pivot Rod			1	1	1
21	EB.1388P1	Clutch Fork			1	1	1
22	EB.1496A1	Cotter Pin			1	1	1
23	EB.1495B1	Spring					1
23A	EB.1786B1	Spring			1	1	
24	EB.1403A1	Clip Ring			2	2	2

ITEM No.	PART No.	PART NAME	QUANTITY PER MACHINE				
			AB 1254	AB 1256	AB 1474	AB 1476	AB 1478
25	EB.0577A1	Nut			2	2	2
26	MW.6/12.5/0.8	Washer			2	2	2
27	EB.1426B1	Drive Shaft					1
27A	EB.1792A1	Drive Shaft				1	
27B	EB.1791A1	Drive Shaft			1		
27C	EB.1652B1	Drive Shaft		1			
27D	EB.1700B1	Drive Shaft	1				
28	EB.1466A1	Oilite Bush	1	1	1	1	1
29	EB.1463A1	Push Rod	1	1	1	1	1
30	MN.216	Nut	1	1	1	1	1
31	MW.16/30/2.0	Washer	1	1	1	1	1
32	EB.1471A1	Clutch Shaft	1	1	1	1	1
33	EB.1459A1	Bush	2	2	2	2	2
34	EB.1468A1	Clutch Body	1	1	1	1	1
35	EB.1451A1	Sprocket/Insert Assy.	1	1	1	1	1
36	EB.1450A1	Clutch Insert	10	10	10	10	10
37	EB.1452A1	Thrust Washer	1	1	1	1	1
38	MW.10/21/2.0	Washer	1	1	1	1	1
39	EB.1449A1	Nut (NB--LH Thread)	1	1	1	1	1
40	EB.1501A1	Ball	1	1	1	1	1
41	EB.1361A1	Ball	42	42	42	42	42
42	EB.1474A1	Pressure Plate	1	1	1	1	1
43	EB.1502B1	Spring	3	3	3	3	3
44	MW.6/14/1.6	Washer	3	3	3	3	3
45	MS.0906/10	Screw	3	3	3	3	3
46	EB.1785A1	Grub Screw	1	1	1	1	1
47	MN.0206	Nut	1	1	1	1	1

\*14" (342) Models Prior to Serial No. 1954 — use June 1981 issue.

# SPROCKETS, CHAINS, ADJUSTERS



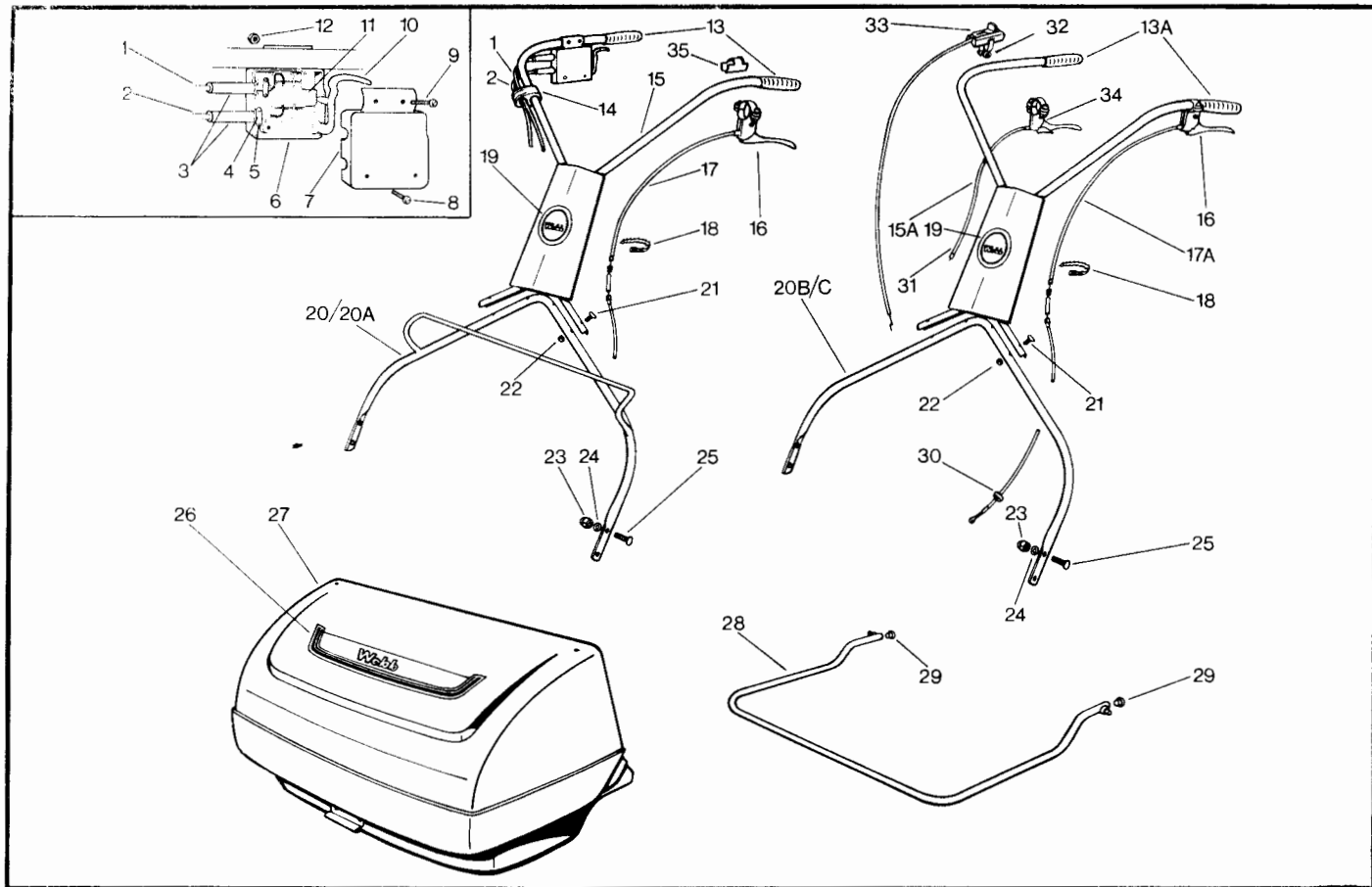


ITEM No.	PART No.	PART NAME	QUANTITY PER MACHINE				
			AB 1254 343	AB 1256 341	AB 1474 342	AB 1476 340	AB 1478 338
1	<b>EB.1441B1</b>	Pad (Chain Tensioners)	3	3	3	3	3
2	<b>EB.1446A2</b>	Chain Tensioner	1	1	1	1	1
3	<b>LWM.8</b>	Spring Washer	2	2	2	2	2
4	<b>MS.0108/14</b>	Screw	1	1	1	1	1
5	<b>EB.1446A1</b>	Chain (Cutter)			1	1	1
5A	<b>EB.1447A1</b>	Chain (Cutter)	1	1			
6	<b>EB.1413B1</b>	Sprocket			1	1	1
6A	<b>EB.1632B1</b>	Sprocket	1	1			
7	<b>EB.1460A1</b>	Key	3	3	3	3	3
8	<b>MW.8/17/1.6</b>	Washer	3	3	3	3	3
8A	<b>EB.1780</b>	Washer	1	1	1	1	1
8B	<b>WR.417</b>	Washer	1	1	1	1	1
9	<b>EB.0578/A1</b>	Nut	3	3	3	3	3

ITEM No.	PART No.	PART NAME	QUANTITY PER MACHINE				
			AB 1254 343	AB 1256 341	AB 1474 342	AB 1476 340	AB 1478 338
10	<b>EB.1444B1</b>	Tensioner (Land Roller)	1	1	1	1	1
11	<b>EB.1400B1</b>	Sprocket (Land Roller)	1	1	1	1	1
12	<b>EB.1448A1</b>	Chain (Land Roller)	1	1	1	1	1
13	<b>MW.12/24/1.6</b>	Washer	2	2	2	2	2
14	<b>EB.0580B1</b>	Nut	2	2	2	2	2
15	<b>EB.1443B1</b>	Tensioner (Interm.)	1	1	1	1	1
16	<b>EB.1447A1</b>	Chain (Intermediate)	1	1	1	1	1
17	<b>EB.1756B1</b>	Collar	1	1	1	1	1
*18	<b>EB.1758B1</b>	Sprocket Assembly	1	1	1	1	1
19	<b>MS.108/16</b>	Screw	2	2	2	2	2
20	<b>W.5SH</b>	Washer	1	1	1	1	1
21	<b>FD.10EXT</b>	Washer	1	1	1	1	1
22	<b>EB.1750A1</b>	Link (Landroll Chain) not illustrated					

\* N.B. Prior to Serial No. 2336 refer to Feb. 1981 issue.

# GRASS BOX AND HANDLE ASSEMBLIES

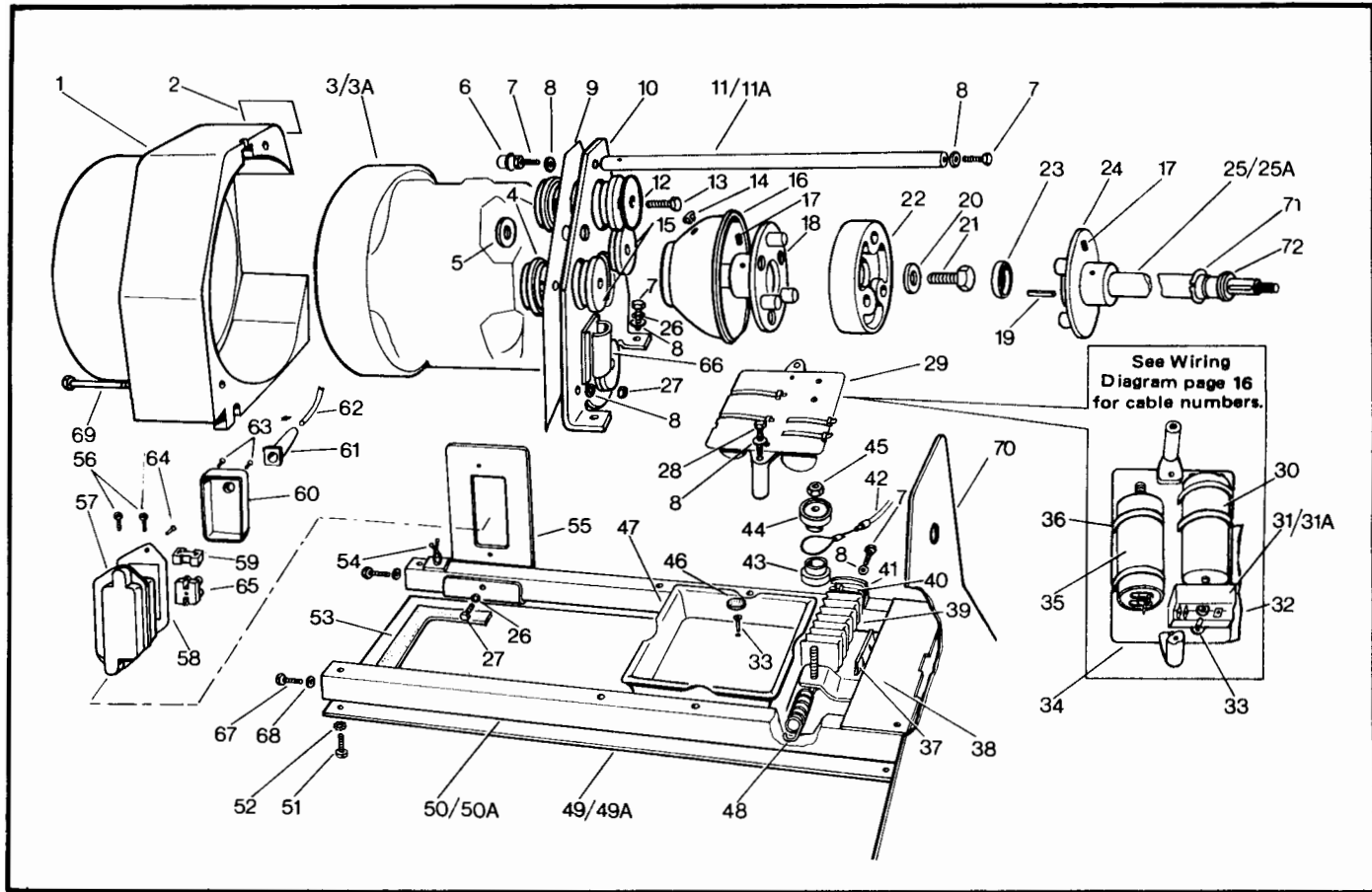


ITEM No.	PART No.	PART NAME	QUANTITY PER MACHINE				
			AB	AB	AB	AB	AB
			1254 343	1256 341	1474 342	1476 340	1478 338
1	EB.1683A1	Lead (Switch to Motor)	1	1			
2	EB.1702A1	Lead (Main Supply)	1				
2A	EB.1687A1	Lead (Main Supply)		1			
3	LM.5352	Grommet	2	2			
4	EB.1068B1	Cord Grip	2	2			
5	EB.1071B1	Screw	4	4			
6	EB.1512B1	Switch Box	1	1			
7	EB.1510B1	Switch Box Cover	1	1			
8	MS.0704/20	Screw (Short)	2	2			
9	MS.0704/30	Screw (Long)	2	2			
10	EB.1514B1	Trigger	1	1			
11	EB.1698A1	Switch	1	1			
12	EB.1682A1	Nut	4	4			
13	EB.1681B1	Grip (Mains Elec.)	2	2			
13A	LM.6094	Grip (Motor Mower)			2	2	2
14	EB.1427B1	Cable Guide	1	1			
15	EB.1672A1	Upper Handle	1	1			
15A	EB.1334A2*	Upper Handle			1	1	1
16	EB.1907A1*	Clutch Lever (LH)	1	1	1	1	1
17	EB.1913A1*	Cable (L/Roll Clutch)	1	1			
17A	EB.1912A1*	Cable (L/Roll Clutch)			1	1	1
18	EB.0585A1	Cable Tie	3	3	4	4	4
19	EB.1357A1	Decal	1	1	1	1	1
20	EB.1518P1	Lower Handle	1				

ITEM No.	PART No.	PART NAME	QUANTITY PER MACHINE				
			AB	AB	AB	AB	AB
			1254 343	1256 341	1474 342	1476 340	1478 338
20A	EB.1719P1	Lower Handle		1			
20B	EB.1570P1	Lower Handle			1		
20C	EB.1569P1	Lower Handle				1	
20D	EB.1313P1	Lower Handle					1
21	EB.0196B1	Bolt	4	4	4	4	4
22	EB.0577A1	Nut (Nylock)	4	4	4	4	4
23	EB.0579A1	Nut (Nylock)	2	2	2	2	2
24	MW.10/21/2.0	Washer	2	2	2	2	2
25	EB.1370B1	Bolt	2	2	2	2	2
26	EB.1303A1	Decal	1	1	1	1	1
27	EB.1553A1	Grass Box	1		1		
27A	EB.1550A1	Grass Box		1		1	
27B	EB.1302A1	Grass Box					1
28	EB.1568P1	Cradle	1		1		
28A	EB.1567P1	Cradle		1		1	
28B	EB.1307P1	Cradle					1
29	EB.1324B1	Plug	2	2	2	2	2
30	EB.1362B1	Grommet			1	1	1
31	EB.1911A1*	Cable Main Clutch			1	1	1
32	EB.2315A1*	Screws			2	2	2
33	EB.1903A1*	Throttle Control with Cable			1	1	1
34	EB.1909A1*	Lever RH			1	1	1
35	EB.1461B1	Sleeve	1	1			

\*Models prior to S/No.'s AB1254 S/No.03239/AB1256 S/No.02598/AB1474 S/No.05489/  
AB1476 S/No.05734/AB1478 S/No.03895 — use June 1982 Issue.

# ELECTRIC MOTOR & MAINS ELECTRIC PLATFORM

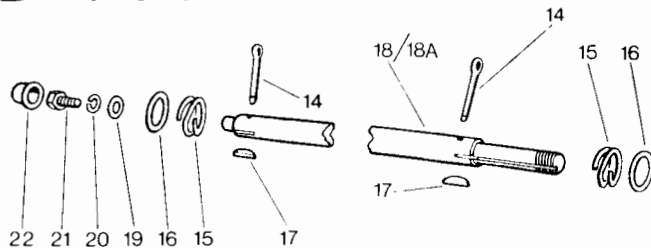
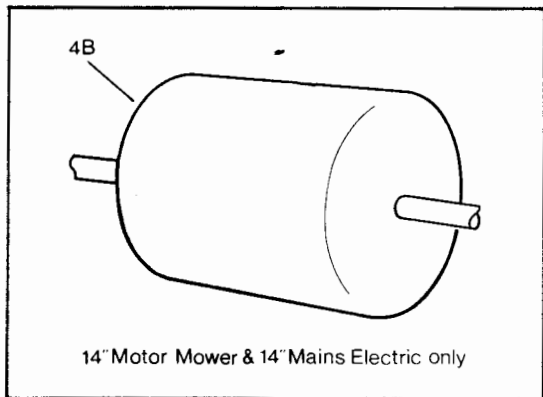
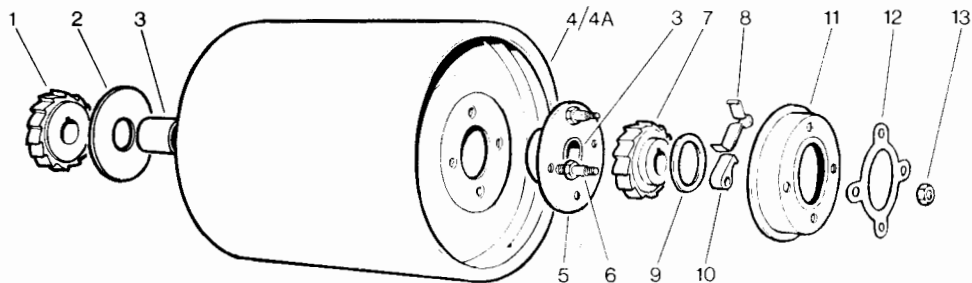


ITEM No.	PART No.	PART NAME	QUANTITY PER MACHINE	
			AB	AB
			1254 343	1256 341
1	EB.1533B1	Air Duct	1	1
2	EB.1694A1	Decal (Warning)	1	1
3	EB.1715A1	Motor	1	
3A	EB.1650A1	Motor		1
4	EB.1530B1	Bush (Motor Mounting)	4	4
5	EB.1648B1	Grommet	1	1
6	EB.1678B1	Nut Cap	1	1
7	MS.0106/14	Screw	1	1
8	MW.6/12.5/1.6	Washer	1	1
9	EB.1669B1	Insulation	1	1
10	EB.1532P1	Motor Mounting Plate	1	1
11	EB.1548P1	Tie Bar	1	
11A	EB.1701P1	Tie Bar		1
12	EB.1808B1	Support Washer	4	4
13	MB.0108/30	Bolt	4	4
14	EB.1673B1	Plug	1	1
15	EB.1531B1	Bush (Outer)	4	4
16	EB.1671B1	Shroud	1	1
17	EB.0537A1	Grub Screw	1	1
18	EB.1522B1	Drive Dog Assembly	1	1
19	EB.1460A1	Key	1	1
20	MW.10/21/2.0	Washer	1	1
21	MS.0110/20	Screw	1	1
22	EB.1521B1	Coupling	1	1
23	EB.1529B1	Insulation Cap	1	1
24	EB.1526B1	Drive Dog Assembly	1	1
25	EB.1700B1	Extension Shaft	1	
25A	EB.1652B1	Extension Shaft		1
26	LWM.6	Washer	2	2
27	EB.0577B1	Nut	2	2
28	MS.0106/35	Screw	2	2
29	EB.1638A1	Relay Plate Assembly		1
29A	EB.1806A1	Relay Plate Assembly	1	
30	EB.1645A1	Capacitor (30UF-275V)	1	1
31	EB.1804A1	Relay (170)	1	
31A	EB.1637A1	Relay (206)		1
32	EB.1646B1	Edge Trim	1	1
33	EB.0243A1	Pop Rivet	4	4
34	EB.1635A1	Relay Plate	1	1
35	EB.1644A1	Capacitor (10UF-400V)	1	

ITEM No.	PART No.	PART NAME	QUANTITY PER MACHINE	
			AB	AB
			1254 343	1256 341
36	EF.1531	Plastic Strap	4	4
37	EB.1727B1	Seal	1	1
38	EB.1728A1	Cover Plate	1	1
39	EB.1506B1	Gaiter	1	1
40	LM.5349	Plastic Strap	1	1
41	EB.1517B1	Cable Bracket	1	1
42	EB.1666A1	Cable (Landroll Clutch)	1	1
43	EB.1516B1	Insulation Bush (L)	1	1
44	EB.1515B1	Insulation Bush (U)	1	1
45	EB.0576A1	Nut	1	1
46	EB.1677B1	Insulation Disc	2	2
47	EB.1630B1	Insulation Sump	1	1
48	EB.1503B1	Spring	1	1
49	EB.1705P1	Blanking Plate	1	
49A	EB.1545P1	Blanking Plate		1
50	EB.1619P2	Motor Bearers	2	
50A	EB.1648P2	Motor Bearers		2
51	MS.0906/10	Screw	4	4
52	FOM.6/INT.	Washer	4	4
53	EB.1722B1	Seal	1	1
54	EB.1720B1	Wire Tie	1	1
55	EB.1547P1	Bracket (Terminal Box)	1	1
56	MS.0704/16	Screw	2	2
57	EB.1539B1	Terminal Box	1	1
58	EB.1654B1	Gasket	1	1
59	EB.1540B1	Cable Clamp	1	1
60	EB.1538B1	Terminal Lid	1	1
61	LM.5352	Grommet	1	1
62	EB.1683B1	Lead—Sw. to Motor)	1	1
63	EB.1071B1	Screw	4	4
64	LM.5421	Rivet	2	2
65	EB.1065A1	Terminal Block	1	1
66	EB.1679B1	Cable Clip	1	1
67	MS.011/14	Screw	2	2
68	EB.1798A1	Ramp Washer	2	2
69	MS.0106/70	Bolt	2	2
70	EB.1836P1 *	Side Plate	1	1
71	EB.1431A1	Circlip	1	1
72	EB.1428A1	'V' Ring	1	1

\* Models prior to S/No. 03244 — use June 1982 Issue.

# LAND ROLLER ASSEMBLY

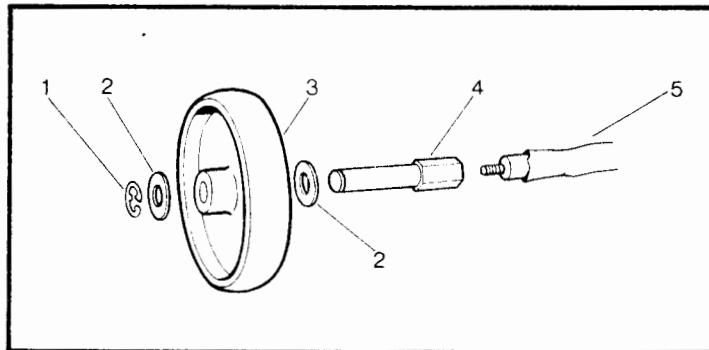




ITEM No.	PART No.	PART NAME	QUANTITY PER MACHINE					
			AB 1254	AB 1256	AB 1474	AB 1476	AB 1478	
			343	341	342	340	338	
1	EB.1390A1	Ratchet (RH)		1		1	1	
2	LW.12SL	Washer (As Required)		1/2		1/2	1/2	
3	LM.151	Bush		4		4	4	
4	EB.1486B1	Land Roller Half						2
4A	EB.1639A1	Land Roller Half		2		2		
4B	EB.1602T1	Land Roller	1		1			
5	EB.1733A1	Hub (with Bush)		2		2	2	
6	EB.1392A1	Pawl Stut		8		8	8	
7	EB.1391A1	Ratchet (LH)		1		1	1	
8	LM.160	Pawl Spring		4		4	4	
9	EB.1717A1	Thrust Washer		2		2	2	
10	LM.159NP	Pawl		4		4	4	
11	EB.1718B1	Pawl Cover		2		2	2	

ITEM No.	PART No.	PART NAME	QUANTITY PER MACHINE					
			AB 1254	AB 1256	AB 1474	AB 1476	AB 1478	
			343	341	342	340	338	
12	EB.1716B1	Tab Washer		2		2	2	
13	MN.0106	Nut		8		8	8	
14	EB.1430A1	Cotter Pin		2		2	2	
15	EB.1487A1	Spring Washer		2		2	2	
16	MW.16/30/2.0	Washer		2		2	2	
17	EB.1383B1	Key		2		2	2	
18	EB.1478A1	Spindle						1
18A	EB.1603A1	Spindle		1		1		
19	MW.8/17/1.6	Washer	1	1	1	1	1	1
20	LWM.8	Spring Washer	1	1	1	1	1	1
21	MS.0108/6	Screw	1	1	1	1	1	1
22	EB.1475B1	Nut Cap	1	1	1	1	1	1

## OUTRIGGER WHEELS

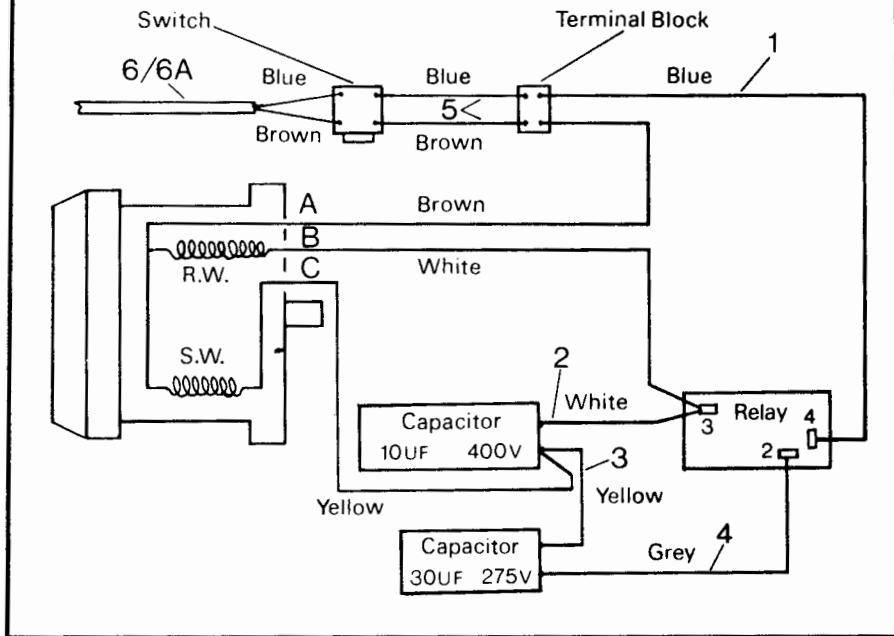


PART No.	PART NAME	Quantity
L24224	Parts Manual	1 (All Models)
L24222	Instruction Book	1 (Motor Mower)
EB.1695A2	Instruction Book	1 (Mains Electric)

ITEM No.	PART No.	PART NAME	Quantity
1	EB.1656 A1	Circlip	2
2	MW.16/30/2.0	Washer	4
3	EB.1655 B1	Wheel (5" dia.)	2
4	EB.1508 B1	Stub Axle	2
5	EB.1509 B1	Sleeve (Tie Rod Protection)	1
		Cut to length	1

## WIRING DIAGRAM

### SCHEMATIC WIRING DIAGRAM 14" & 18" MAINS ELECTRIC



ITEM No.	PART No.	PART NAME	QUANTITY PER MACHINE	
			AB 1254	AB 1256
1	EB.1647A1	Lead (Blue) Terminal Block to Relay 4	1	1
2	EB.1642A1	Lead (White) Capacitor to Relay 3	1	1
3	EB.1640A1	Lead (Yellow) Capacitor Link	1	1
4	EB.1641A1	Lead (Grey) Capacitor to Relay 2	1	1
5	EB.1683A1	Lead (Twin) Switch to Terminal Block	1	1
6	EB.1702A1	Lead (Twin) Mains Supply	1	-
6A	EB.1687A1	Lead (Twin) Mains Supply	-	1

Webb Lawnmowers Limited  
 Service Department,  
 Sunnyhill Avenue,  
 Derby DE3 7JT.  
 Telephone: 0332 760202 : Telex: 377514

L24224

Printed in England