

OPERATOR'S INSTRUCTIONS
AND
ILLUSTRATED LIST OF PARTS
FOR

59

Ransomes
“ ASCOT ”
LAWN MOWER MK. 1



RANSOMES SIMS & JEFFERIES LTD.

ORWELL WORKS :: IPSWICH :: ENGLAND

Telephone: IPSWICH 54711 (8 lines)

Telegrams: "RANSOMES 27-2708 TELEX"

OPERATOR'S INSTRUCTIONS

The lawn should be swept before using the machine, to remove stones, worm heaps, and rubbish which *blunt and damage* the knives and prevent the machine from working properly.

TO ALTER HEIGHT OF CUT

The Height of cut is regulated by means of the front roll carriages. To cut closer raise equally the side carriages LMS 910 and 911 which carry the front roll ; to cut higher the carriages should be lowered.

Caution. The machine should never be used with the bottom blade pressing on the lawn as this will damage the spiral cutters, the machine will work heavily and the turf will not be cut properly. To see if the machine is correctly set, turn the machine on its side and place a straight edge across the land and front rolls. There should be a gap of at least $\frac{3}{16}$ " between the straight edge and the bottom block.

ADJUSTING THE CUTTING CYLINDER

The cutting cylinder is set correctly before despatch and no adjustment should be necessary for some time. **It is advisable** occasionally to make tests to ensure that the machine is cutting cleanly. This is easily done by inserting a piece of writing paper between the cutting cylinder and the bottom blade whilst carefully rotating the cylinder by hand. If correctly set it should be possible to cut the paper over the entire width of each cutter. If adjustment should be necessary slacken the locknuts (LS 1808/3) attached to the set screws (LAJ 215) and then turn the screw in a clockwise direction until the spiral cutters just touch the bottom blade throughout the whole length. It is advisable when adjusting to make a small adjustment to each screw alternately.

When correctly set, the knives should be in light wiping contact with the bottom blade and **revolve freely**. Tighten the lock nuts after making the adjustment.

CAUTION. In the course of time, as the cutting cylinder and bottom blade become worn the springs will close up. The springs should be shortened before making any adjustment as otherwise damage to the side frames will occur.

ADJUSTING THE HANDLES

The handles can be adjusted for height and width. To adjust for height slacken the two set screws LK 153 at bottom of the handles, move the handles up or down to the most convenient position, and re-tighten the set screws. To adjust for width slacken the two bolts holding the centre clamp (MAA 0537A) move the handles in or out to desired position and re-tighten bolts.

To sharpen the knives. Set the cutting cylinder to the bottom blade as previously described. Support the side frames so that the land rolls will turn freely. Remove the gear cover and screw in the grinding-in pin into the largest gear wheel. Smear the cutters sparingly with emery or carborundum paste. Then rotate the large gear wheel rapidly anti-clockwise. This will soon freshen the cutting edges and the knives should be gradually adjusted down to the bottom blade as sharpening progresses. The cutters and bottom blade should be carefully wiped clean of surplus paste when sharpening is completed.

CAUTION. Do not let the carborundum or emery paste get into the cylinder bearings as it will wear them away.

LUBRICATION

Oil the following parts with the OIL pressure gun supplied, using OIL of SAE 30 quality.

- (a) **CUTTING CYLINDER BEARINGS.** These bearings are packed with grease. A little OIL should be added occasionally through the lubricators attached to the housings (LK 109 and LK 110).
- (b) **INTERMEDIATE STUD AND GEARS.** A little OIL should be given occasionally through the lubricator on the top of the right hand side frame.
- (c) **LAND ROLLS.** Lubricators will be found through the holes in the land rolls. A little OIL should be applied every time the machine is used.
- (d) **LANDROLL SPINDLE BEARINGS.** These are of the self lubricating type and require no further lubrication.
- (e) **GEAR CASE.** Gear Wheels are greased before despatch and should not require attention for some time. The gear cover, however, should be removed at least once during the season and the gearing re-greased if necessary.

The Front Roll is fitted with sealed, self lubricating bearings which require no attention.

GENERAL ADVICE

Every machine leaves our factory in perfect condition. If any damage is apparent when delivery is made, report the details at once to the makers or the agent supplying the machine.

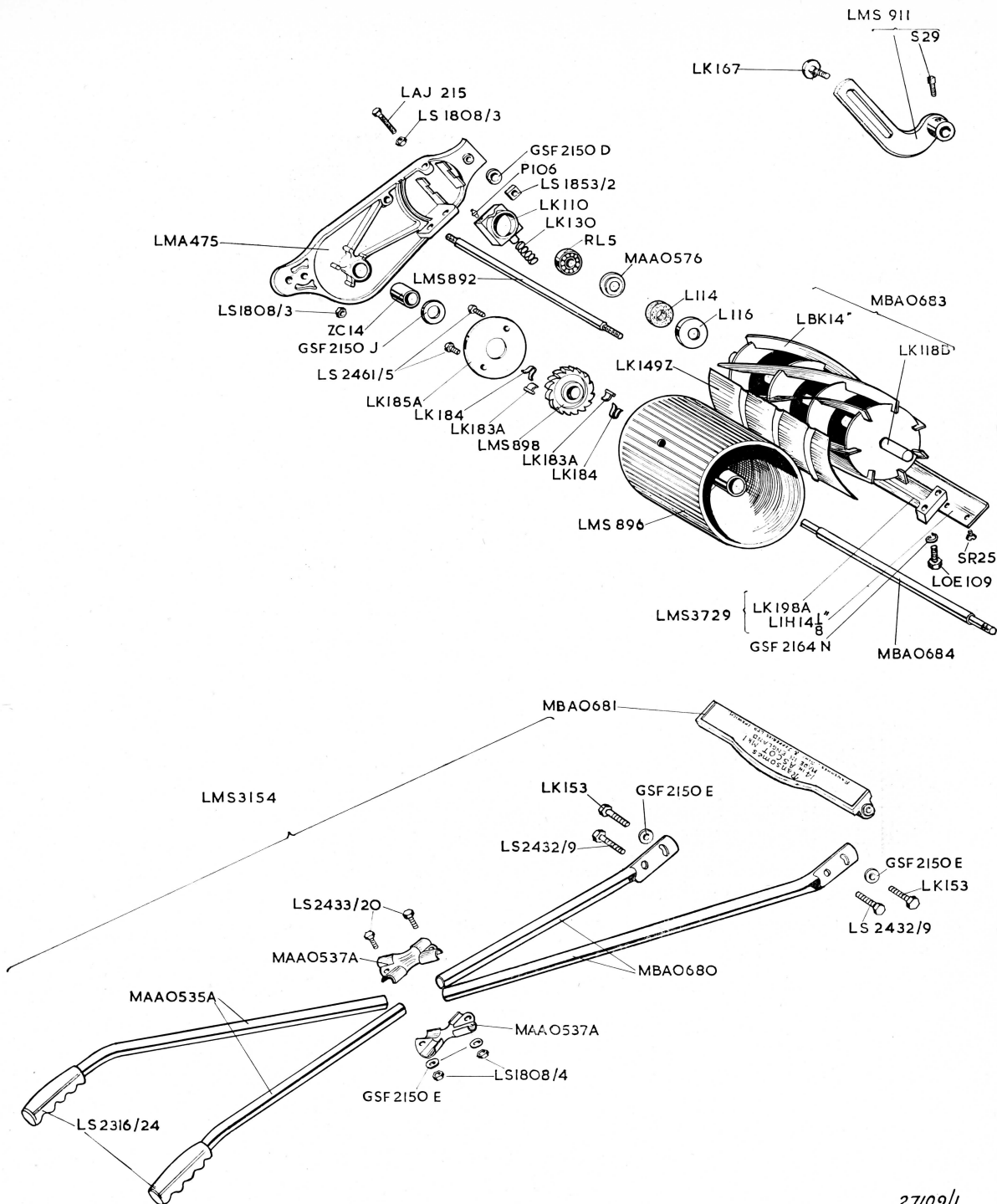
Before cutting, make sure the lawn is free from stones, twigs, etc.; these can damage the cutting cylinder.

If it is desired to leave the cut grass on the lawn, take off the grass box and take out the delivery plate LK 149Z from behind the cutting cylinder.

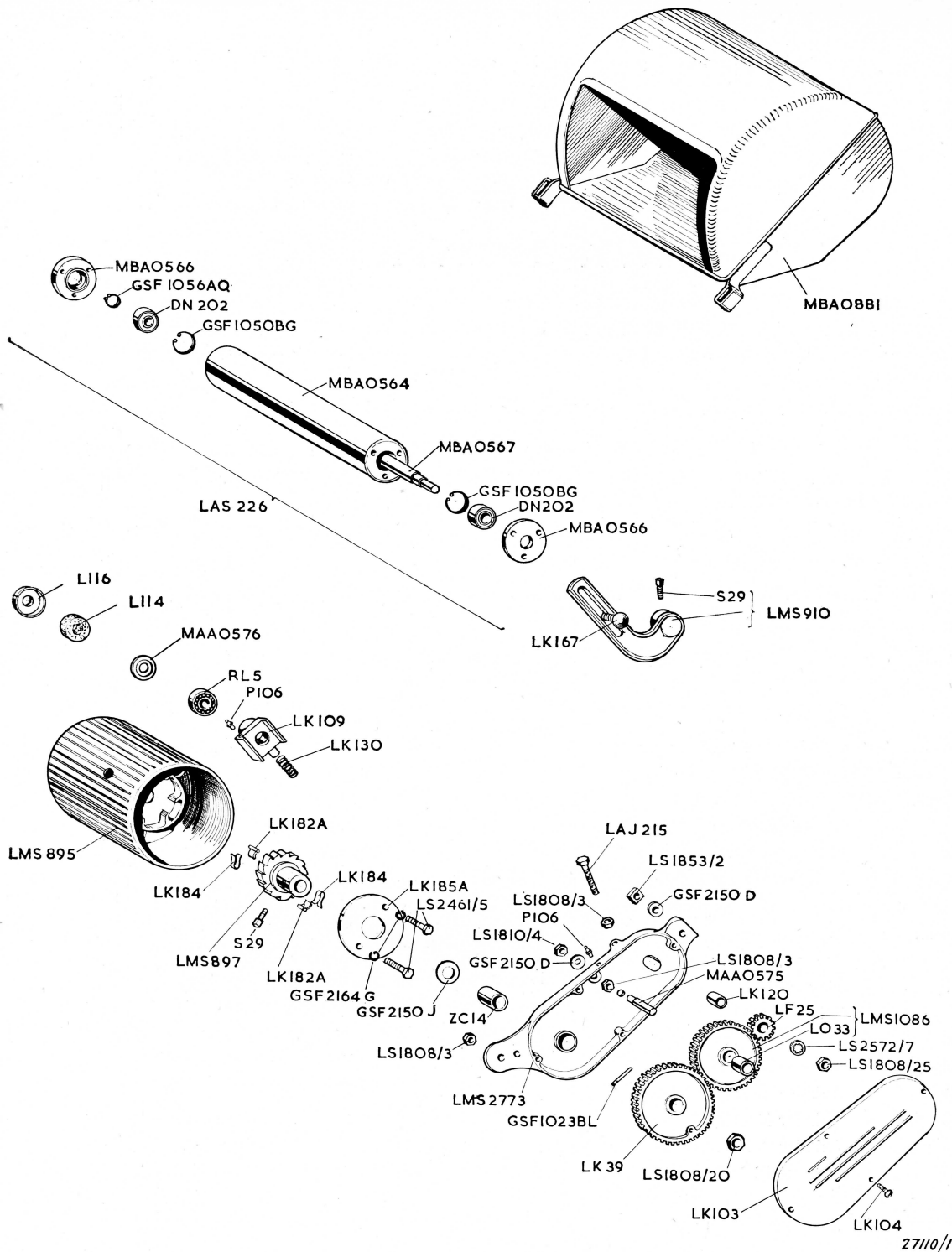
Whenever possible avoid cutting the grass when it is wet as the cuttings tend to hang on the knives and choke the machine instead of being delivered into the grass box.

After using the machine, it should always be well cleaned and stored in a dry place. The knives should be turned a few times to clear the cutting edges, and then greased.

The machine should never be stored with cut grass left in the box.



The above are "exploded" views of the "Ascot" mower showing clearly all the component parts and the part numbers, and the descriptions are given on pages 6 and 7.



27110/1

All spares are available either from your local agent or from Ransomes Sims & Jefferies, Ltd., Orwell Works, Ipswich. When ordering please quote part number and mark of Mower.

ILLUSTRATED LIST OF PARTS

14 in. Mark I

ASCOT LAWN MOWER

NOTE

When ordering spare parts it is essential that the customer should quote the registered number of the machine and the mark of the spare part required. Failure to do this may result in delay in delivery.

Lockwashers where not quoted in this list are of the standard single coil type.

Split pins are also not quoted, but are the standard type.

NUTS. The mark of the nut applicable to any bolt or screwed pin, stud, etc., will be found in brackets by the side of its mating part.

All shafts, studs, etc., are supplied complete with nuts, keys, split pins and washers where applicable.

Parts which are bushed are supplied with bushes already pressed in position.

| Mark | Description | Mark | Description |
|----------------------|-----------------------------------|----------|---------------------------------|
| DN 202 | Ball Bearing—Front Roll | LK 130 | Adjusting Springs—Cylinder |
| GSF 1023BL | Grooved Pin—Main Gear | LK 149Z | Concave |
| GSF 1050BG | Circlip 35 mm—Internal | LK 153 | Setscrew—Handles and Nameplate |
| GSF 1056AQ | Circlip $\frac{9}{16}$ "—External | LK 167 | Bolt—Front Carriage (LS 1853/2) |
| L 114 | Felt Washer | LK 182A | Pawl R.H. |
| L 116 | Dust Cover | LK 183A | Pawl L.H. |
| LAJ 215 | Adjusting Screw (LS 1808/3) | LK 184 | Springs—Pawl |
| LAS 226 | Front Roll—complete | LK 185A | Cover—Ratchet |
| LBK 14-in. | Spiral Cutter | LK 198A | Bottom Block |
| LF 25 | Cylinder Pinion | LMA 475 | Side Frame L.H. |
| LIH 14 $\frac{1}{8}$ | Bottom Blade | LMS 892 | Frame Stay (LS 1808/3) |
| LK 39 | Main Gear | LMS 895 | Land Roll R.H. |
| LK 103 | Cover—Side Frame R.H. | LMS 896 | Land Roll L.H. |
| LK 104 | Screws—Side Frame Cover | LMS 897 | Ratchet R.H. |
| LK 109 | Cylinder Housing R.H. | LMS 898 | Ratchet L.H. |
| LK 110 | Cylinder Housing L.H. | LMS 910 | Front Roll Carriage R.H. |
| LK 118B | Cylinder Spindle (LS 1808/25) | LMS 911 | Front Roll Carriage L.H. |
| LK 120 | Distance Piece—Cylinder Pinion | LMS 1086 | Intermediate Gear and Bush |

| Mark | Description | Mark | Description |
|------------|--|-------------|--|
| LMS 2773 | Side Frame R.H. | | TOOL LIST Grinding-in Pin Oil Gun Spanner— $\frac{1}{4}$ " x $\frac{5}{16}$ " B.S.W. |
| LMS 3154 | Handles—complete | *L 157 | |
| LMS 3729 | Bottom Block and Blade Assembly | *LS 2506/4 | |
| LO 33 | Bush—Intermediate Gear | *LS 2510A/3 | |
| LOE 109 | Screws—Bottom Block | | |
| GSF 2150D | Washer— $\frac{5}{16}$ " dia. hole | | |
| GSF 2150E | Washer— $\frac{3}{8}$ " dia. hole | | |
| GSF 2150J | Washer— $\frac{5}{8}$ " dia. hole | | |
| LS 2316/24 | Handle Grips | | |
| GSF 2164G | Lockwasher—Ratchet Cover Screws | | |
| GSF 2164H | Lockwasher—Bottom Block Screws | | |
| LS 2432/9 | Bolts—Handles (LS 1808/3) | | |
| LS 2433/20 | Bolt—Handle Clamp (LS 1808/4) | | |
| LS 2461/5 | Screws—Ratchet Cover | | |
| LS 2572/7 | Lockwasher—Cylinder Pinion | | |
| MAA 0535A | Handle Tube—Top | | |
| MAA 0537A | Handle Clamp | | |
| MAA 0575 | Spindle—Intermediate Gear (LS 1810/4) | | |
| MAA 0576 | Distance Washer—Cylinder Housing | | |
| MBA 0564 | Front Roll Tube | | |
| MBA 0566 | End Cover—Front Roll | | |
| MBA 0567 | Spindle—Front Roll | | |
| MBA 0680 | Handle Tube—Bottom | | |
| MBA 0681 | Scraper and Nameplate | | |
| MBA 0683 | Cutting Cylinder (LS 1808/25) | | |
| MBA 0684 | Spindle—Land Roll (LS 1808/20) | | |
| MBA 0881 | Grassbox | | |
| P 106 | Lubricators | | |
| RL 5 | Ball Bearing—Cylinder Spindle | | |
| S 29 | Screws—Ratchet and Front Carriage | | |
| SR 25 | Screws—Bottom Blade | | |
| ZC 14 | Bush—Land Roll Spindle | | |
| *45605002 | Screws—Front Roll Ends | | |

*Not Illustrated

1951

RANSOMES SIMS & JEFFERIES, LTD
ORWELL WORKS :: IPSWICH :: ENGLAND

Telephone: IPSWICH 54711 (8 lines)

Telegrams: "RANSOMES 27-2708 TELEX"